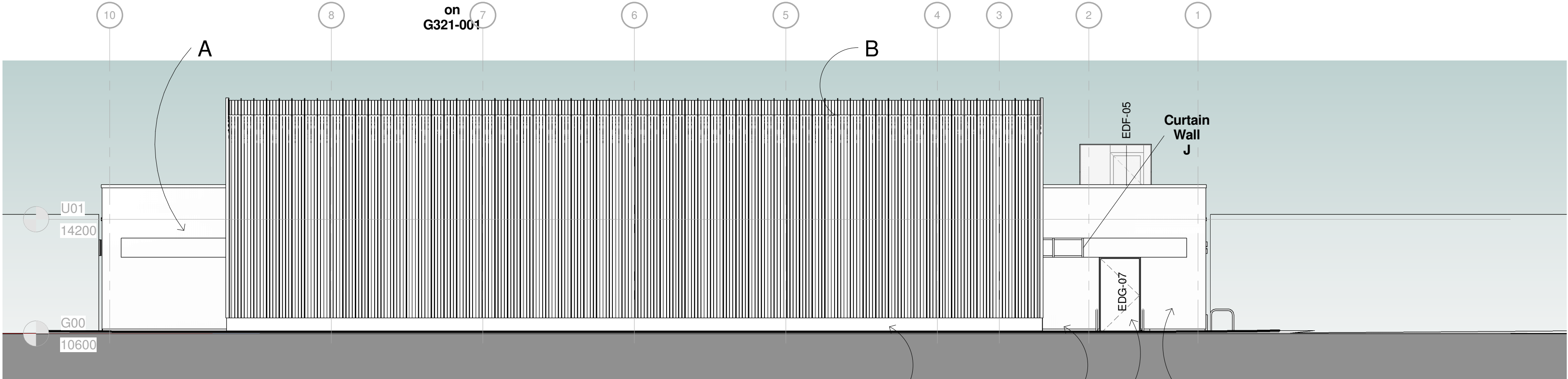
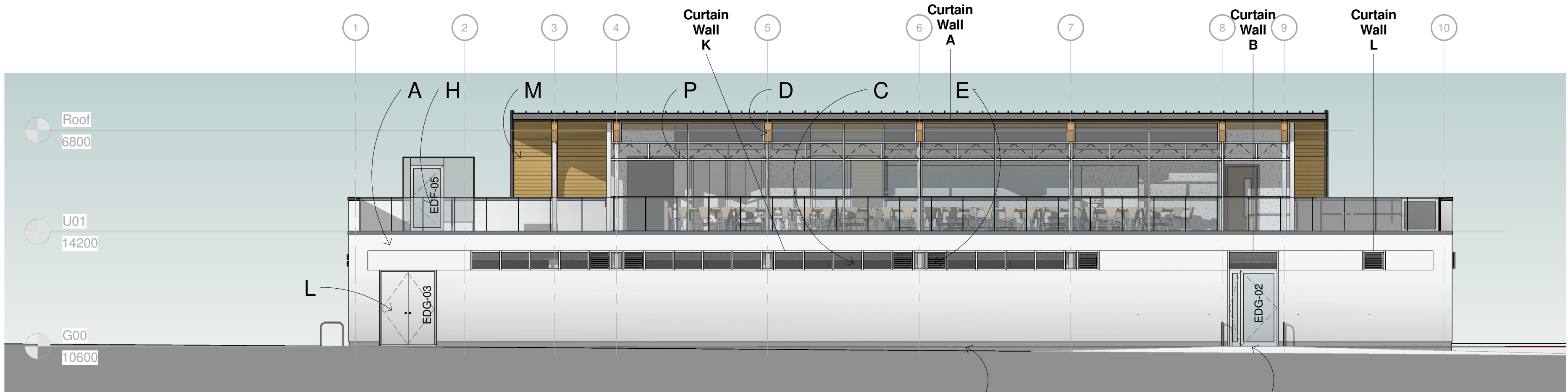


1 North - East Elevation  
1 : 100

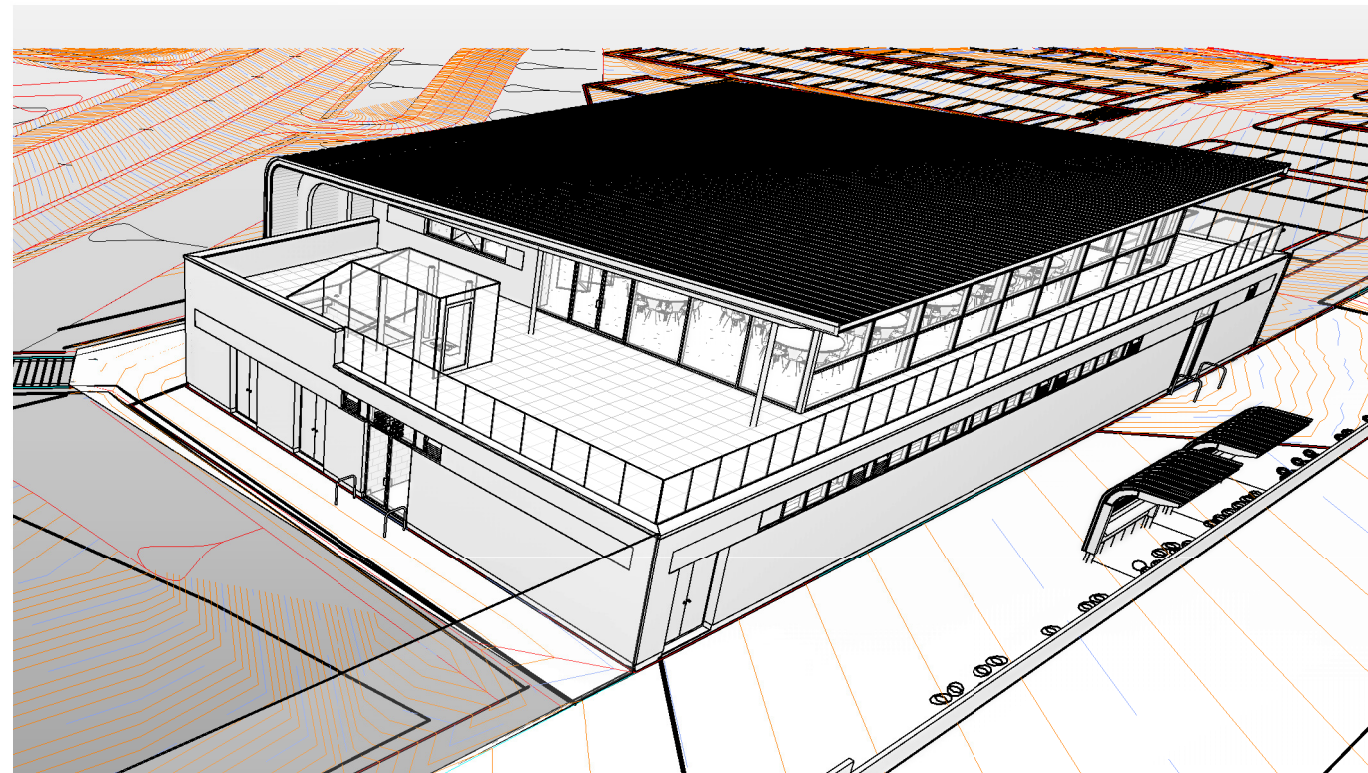
2 South - West Elevation  
1 : 100



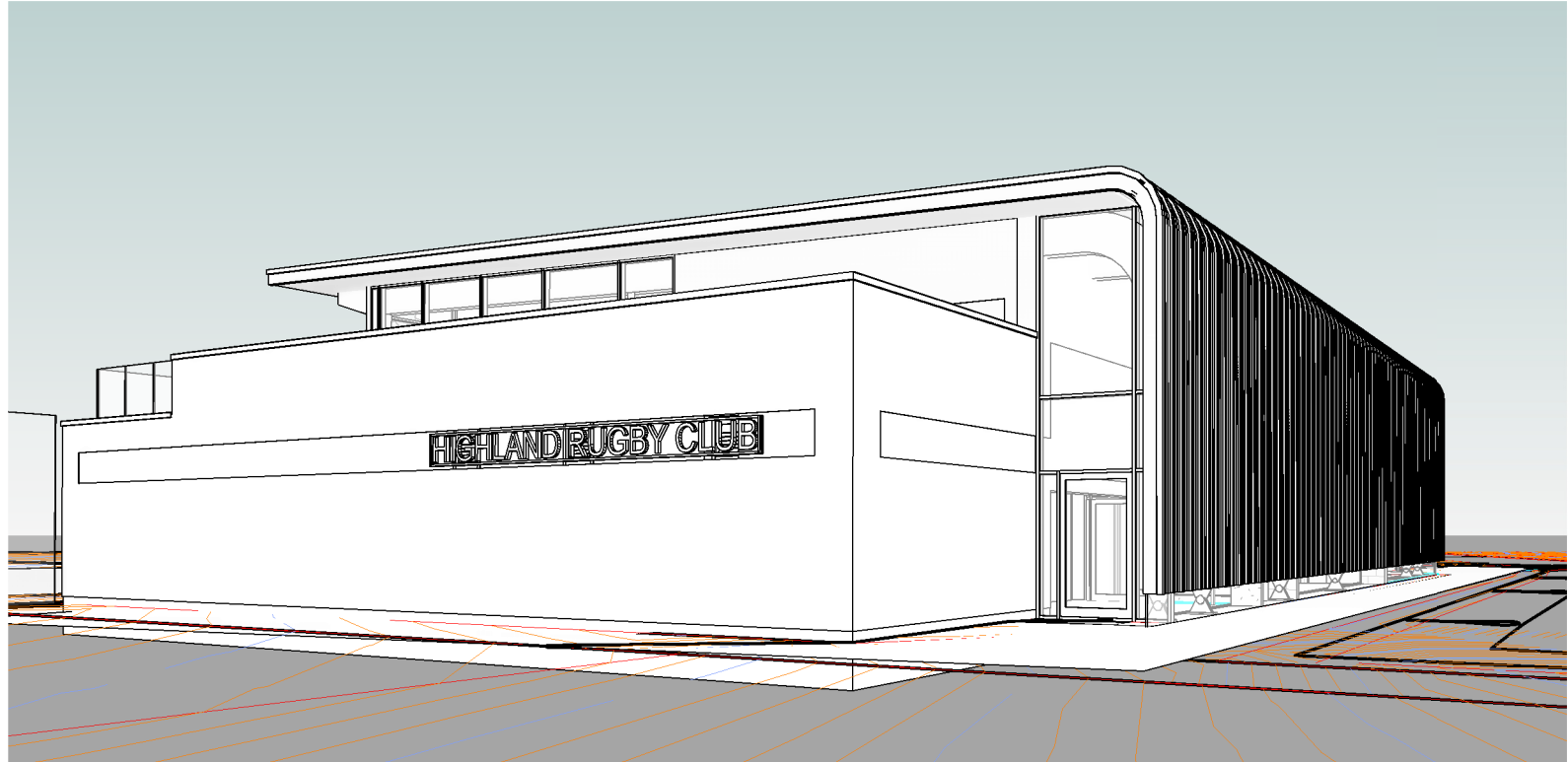
3 North - West Elevation  
1 : 100



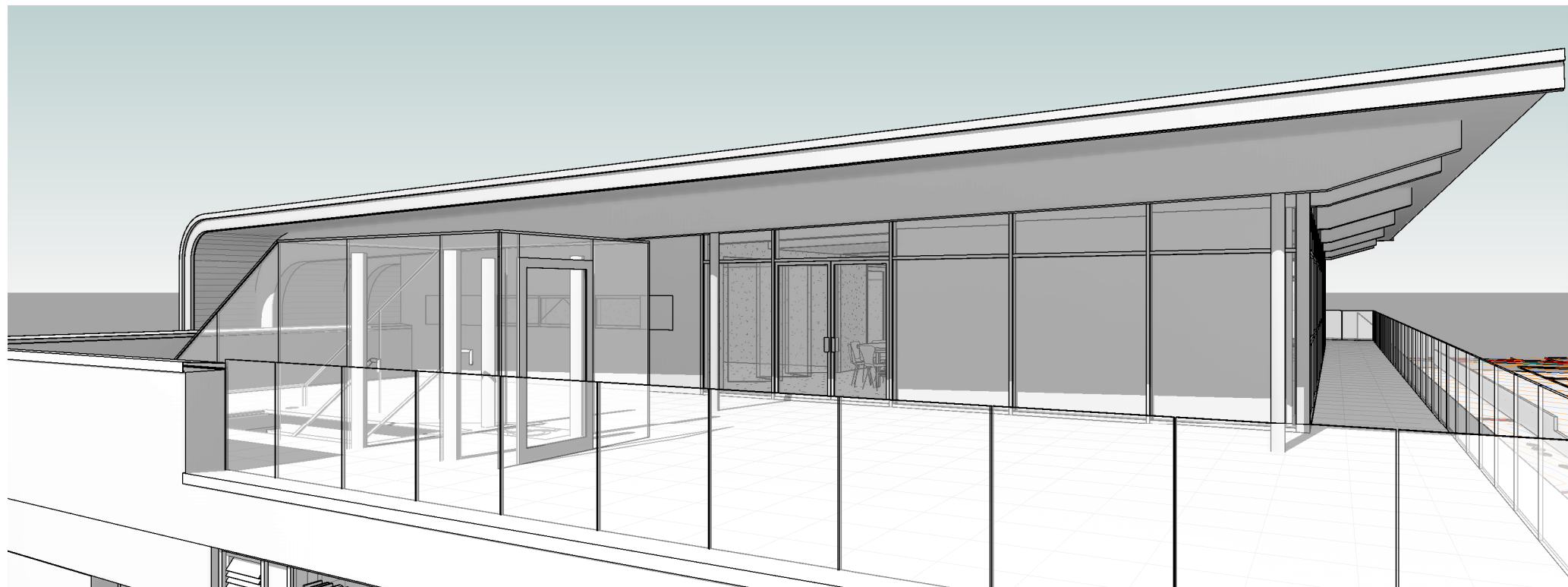
4 South - East Elevation Canopies Omitted for Clarity  
1 : 100



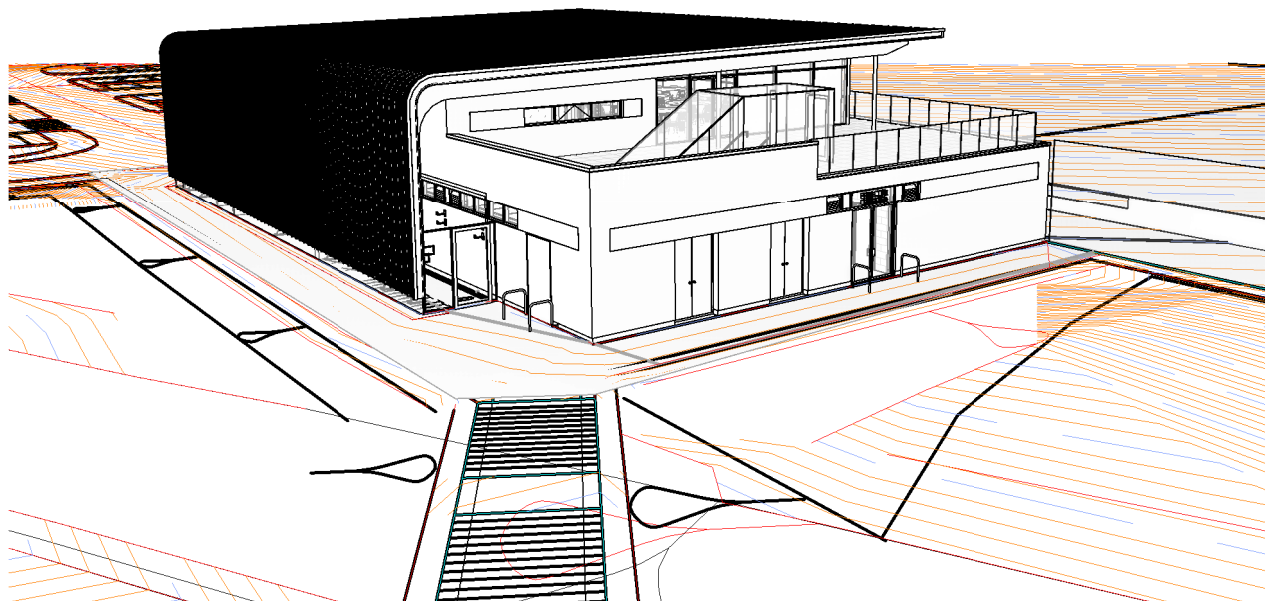
5 Aerial view from the South



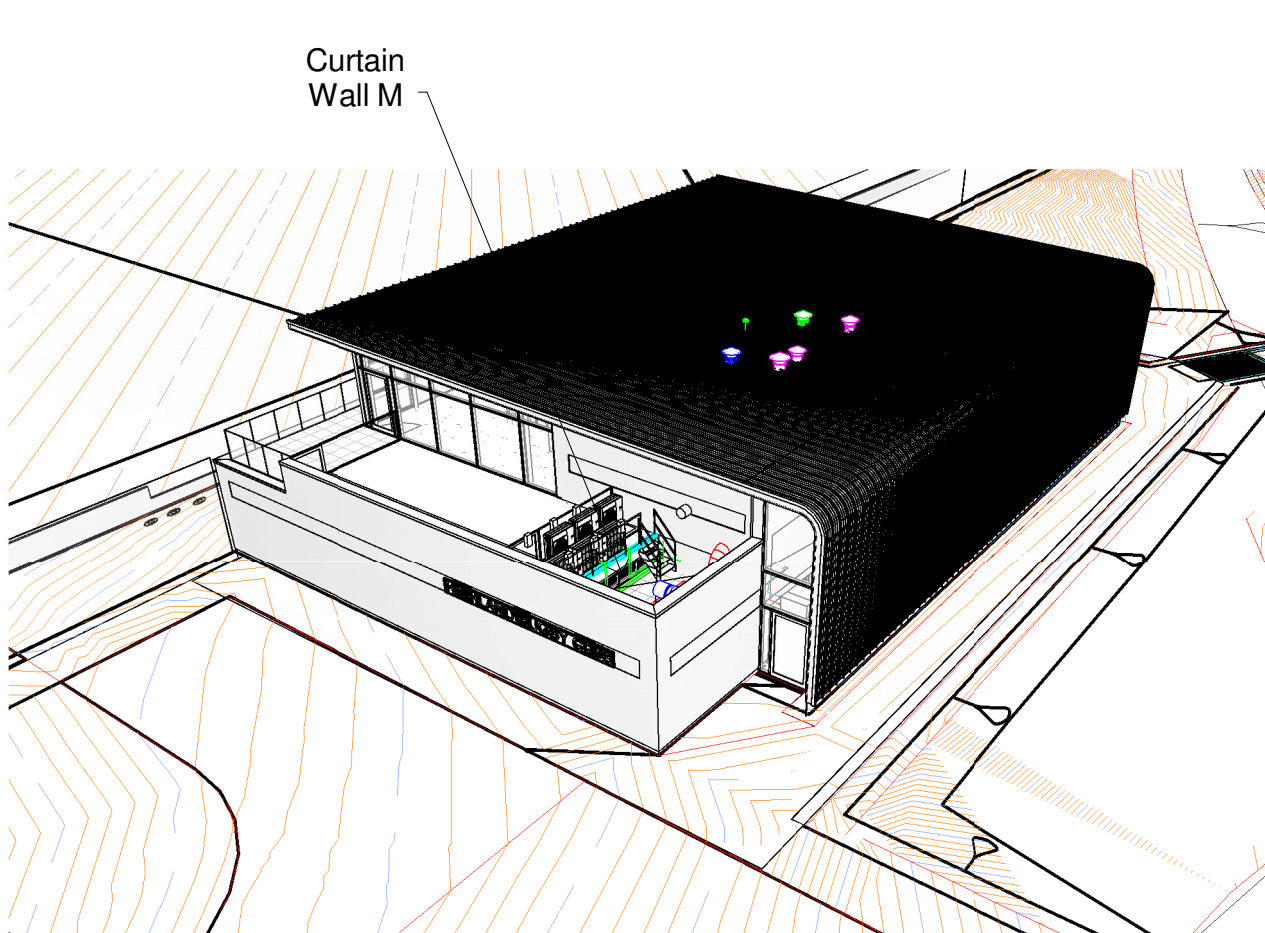
6 View from the North



7 View on to the Roof Terrace



8 View from the West



9 Aerial view from the North

COPYRIGHT, DESIGNS AND PATENTS ACT 1988:

This drawing may not be reproduced, copied or used in any way without the written permission of the Director of Development & Infrastructure.

© THE HIGHLAND COUNCIL

## Notes

Reproduced from the Ordnance Survey mapping with the permission of the Controller of Her Majesty's Stationary Office  
© Crown Copyright.  
Unauthorised reproduction infringes Crown copyright and may lead to prosecution or civil proceedings.  
The Highland Council 2014 100023369

### Material Key:

A: Smooth-Course Render, Ral 9010 Pure White w/ 10mm Recess Detail.  
B: Standing Seam Metal Roof, Matt Ral 7004 Signal Grey.  
C: Aluminium Windows and Doors, Matt Ral 9010 Frames.  
D: Engineered Timber Larch Columns / Beams, Clear Stained.  
E: Louvers within Windows / Curtain Walling, Matt Ral 9010.  
F: Opaque, toughened, Glass 'skirt' to base of Standing Seam.  
G: Not Used.  
H: Clear Glass Balustrade  
J: Illuminated Signage, PPC Aluminium Letters, 50mm Projection, Matt Ral 7004.  
K: PPC Steel Door Protection, Ral 9010.  
L: Non Curtain Walling Steel Doors with vertical groove detailing, Matt Ral 9010.  
M: Tongue & Groove larch soffit, Clear Stained.  
N: Fair faced blockwork masonry plinth, Self finished, Pewter.  
P: Aluminium Curtain Walling inc. Doors, Matt Ral 7004 Signal Grey  
Q: Frameless Structural Glazing

Refer to Mechanical Engineer's Works Information for free area requirements of all louvers generally

Curtain Walls, Doors Labelled	BL	RW	13/06/16	C3
Colour changes for Planning, Escape stair increased.	BL	RW	20/04/16	C2
Status Change from D2 to A - Issued for Construction	BL	RW	15/03/16	C1

Revision Details	Drawn By	Check By	Check Date	Sufx
------------------	----------	----------	------------	------

**CAPITA**  
Architecture  
Kingmoor Business Park, Carlisle, Cumbria  
01228 673000  
www.capita.co.uk/property  
Capita Property and Infrastructure Ltd.

Client  
**The Highland Council**  
**Comhairle na Gaidhealtachd**  
**DEVELOPMENT & INFRASTRUCTURE**  
PROJECT DESIGN UNIT  
Osprey House  
Alness Point Business Park  
Alness, IV17 0UP  
Phone : 01349 886741  
Fax : 01349 886749  
E-Mail : jm.smith@highland.gov.uk

Project  
**Inverness West Link Stage 1 & Canal Park Enhancement**

Title  
**Clubhouse**  
**Elevations and Massing**

Scale @ A1  
**1 : 100**

Drawn  
**RAW**  
Date  
**19/11/2015**

Checked  
**RW**  
Date  
**19/11/2015**

Project No:  
**CS/072660**  
Status  
**A**

Drawing No:  
project origin zone level file type role number  
**HRS7141CAP 00 SGN DR A Z040-001**  
revision  
**C3**